

Automatic Connectors

**Steel, for Aluminum Profiles (i-Modular System),
Right-Angled Connection with Single or Double T-Nut,
or End Face Connection**

SPECIFICATION

Profile type

- Type **S**: Heavy

Coding

- **R**: Right-angled connection
- **D**: With 2 screws and double T-nut
- **S**: End face connection

Steel

Zinc plated, blue passivated **SZ**

INFORMATION

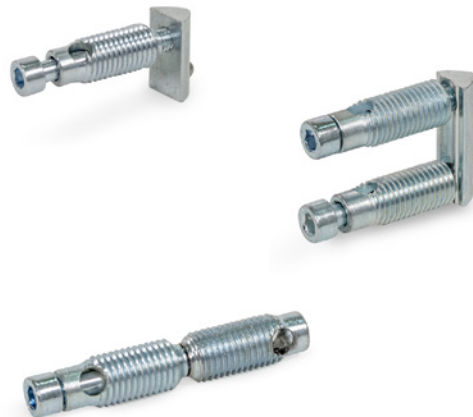
Automatic connectors GN 23i (Coding R) fasten aluminum profiles together at right angles. Machining of the profile is not necessary. The connection can be freely positioned and slid along the slot.

Automatic connectors GN 23i (Coding D) fasten aluminum profiles together at right angles and secure them against twisting. Machining of the profile is not necessary. The connection can be freely positioned and slid along the slot.

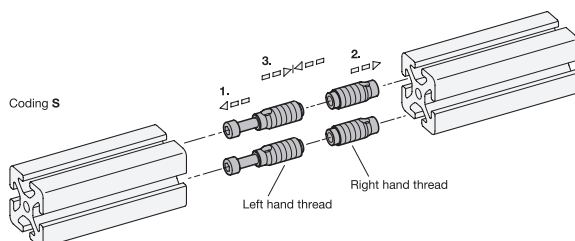
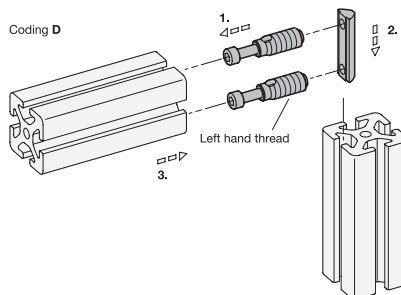
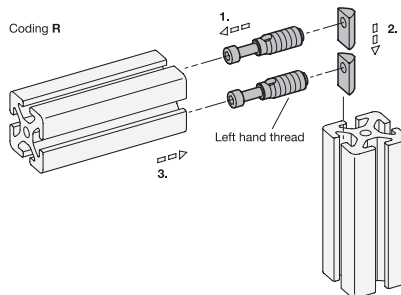
Automatic connectors GN 23i (Coding S) fasten aluminum profiles together on the end faces to extend them while securing them against twisting. Machining of the profile is not necessary.

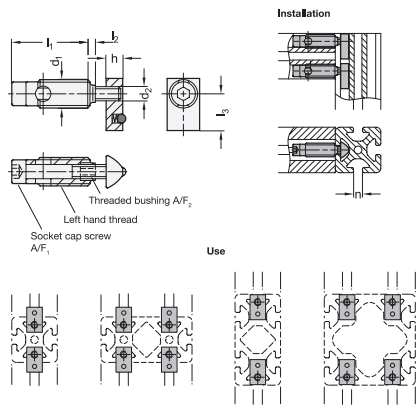
For assembly, first insert the socket cap screw along the slot and then screw in the lightly lubricated threaded bushings. Minor burr formation is possible. Automatic connectors are used in pairs opposite each other. If panels are used in the slot, they must be suitably pocketed.

Automatic connectors are supplied in bundles. The table shows the quantity included in each bundle.



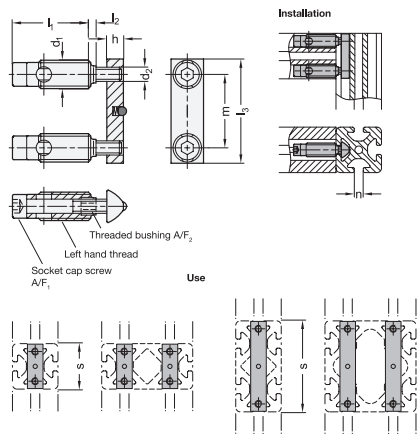
Assembly Instructions





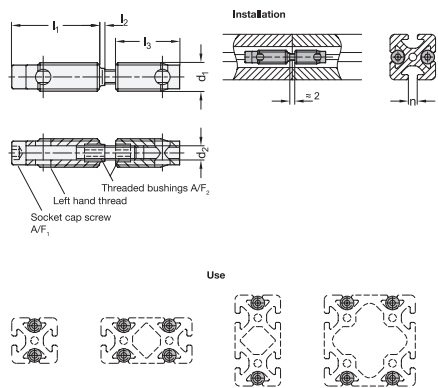
GN 23i-R

Description	n	Bundle Pieces	d ₁ Self-forming thread	d ₂	h	l ₁	l ₂	l ₃	A/F ₁	A/F ₂	Tightening torque in Nm	
GN 23i-6S-R-SZ-4	6	4	S 10	M 5	6	32	-	12	4	5	8	72
GN 23i-8S-R-SZ-4	8	4	S 12	M 6	7	34.5	2.5	16	5	6	14	140



GN 23i-D

Description	s	n	Bundle Pieces	d ₁ Self-forming thread	d ₂	h	l ₁	l ₂	l ₃	m	A/F ₁	A/F ₂	Tightening torque in Nm	
GN 23i-306S-D-SZ-2	30	6	2	S 10	M 5	7	32	-	28	17	4	5	8	82
GN 23i-408S-D-SZ-2	40	8	2	S 10	M 5	6	32	-	36	24	5	6	14	91
GN 23i-606S-D-SZ-2	60	6	2	S 10	M 5	7	32	-	58	47	4	5	8	105
GN 23i-808S-D-SZ-2	80	8	2	S 12	M 6	7	34.5	2.5	76	64	5	6	14	127



GN 23i-S

Description	n	Bundle Pieces	d ₁ Self-forming thread	d ₂	l ₁	l ₂	l ₃	A/F ₁	A/F ₂	Tightening torque in Nm	
GN 23i-6S-S-SZ-4	6	4	S 10	M 5	32	-	27	4	5	8	92
GN 23i-8S-S-SZ-4	8	4	S 12	M 6	34.5	2.5	30.8	5	6	14	172